



ENTER IN OUR WORLD

www.bmaboats.com



Tutti i prodotti BMA sono in costante evoluzione e miglioramento, pertanto Ribitaly si riserva il diritto di apportare modifiche senza nessuna comunicazione o preavviso. Questo catalogo contiene informazioni di carattere generale e non costituisce un documento contrattuale.



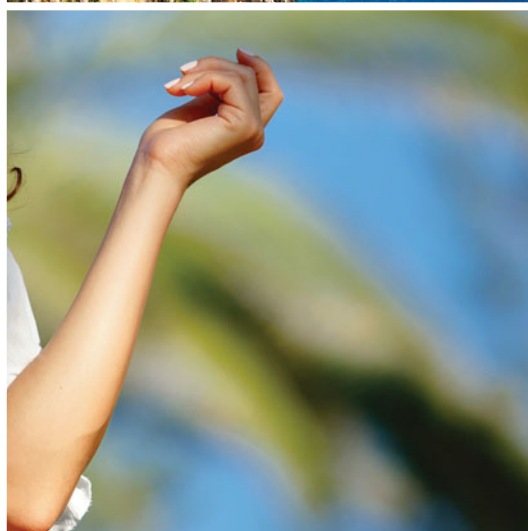
CUORE ITALIANO





CUORE ITALIANO

Innovative design, attention to detail and handcraft production excellence make the Italian nautical tradition a reference in the world.





INDEX

Open

Cabin sundeck

BMA X199

BMA X233

BMA X222

BMA X277

BMA X266

BMA X299

Open

X199

ORIGINAL STYLE

An avant-garde design that conveys style and dynamism at the first glance to satisfy shipowners attentive to aesthetics. Performance, safety and comfort make this boat unique.





OUTSTANDING PERFORMANCE

TO REACH EVERY DESTINATION



X199



TOTAL RELIABILITY

IN ALL SEA CONDITIONS



BMAx199

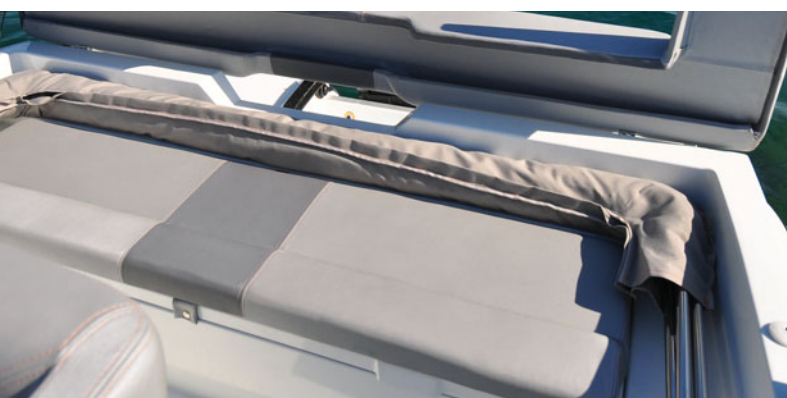
MAXIMUM FREEDOM

TO LIVE ON BOARD



ELEGANCE AND COMFORT

IN ALL DETAILS



ORIGINALITY AND FUNCTIONALITY

THE PLEASURE OF
EXPERIENCING THE SEA





HIGH-QUALITY ACCESSORIES

FOR THE UTMOST COMFORT



PRACTICAL AND VERSATILE

FOR EVERY MOMENT OF THE DAY



SOUGHT DETAILS

FOR A UNIQUE STYLE



BMAx199



OVERALL LENGTH:
6,58 m



PEOPLE:
7



MIN POWER:
40 CV



APPROVED LENGTH:
5,87 m



TANK:
90 L



SUGGESTED POWER:
100 CV



WIDTH:
2,35 m



WATER:
70 L



MAX POWER:
150 CV



WEIGHT:
~900 Kg



FOOT:
L



Open

X222

STRONG CHARACTER

A personality that seduces. An assertive character exalts the powerful, minimalist silhouette developed to express exclusivity and style without sacrificing comfort, safety and performance. Hull lines convey a sense of essentiality.





PERFORMANCE AND **CONTROL**

TO ENJOY THE SEA



X222



SPORTIVE **DESIGN**

AND SOPHISTICATED DETAILS



BMAx222

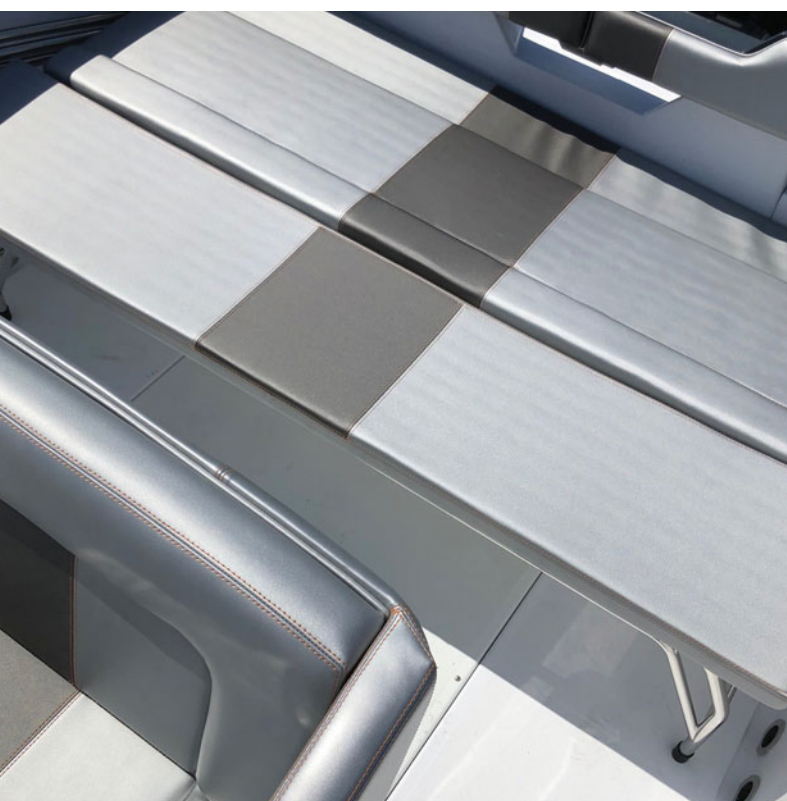
VERSATILE AND **SPACEFUL**

TO LIVE ON BOARD



FUNCTIONAL AND **ESSENTIAL**

FOR ALL ACTIVITIES



INNOVATIVE AND **EASY**

FOR SERENITY AND COMFORT





BMAx222



OVERALL LENGTH:
7,50 m



APPROVED LENGTH:
6,98 m



WIDTH:
2,52 m



WEIGHT:
~1,200 Kg



PEOPLE:
8



TANK:
190 L



WATER:
70 L



MIN POWER:
100 CV



**SUGGESTED
POWER:**
175 CV



MAX POWER:
230 CV



FOOT:
XL



Open

X266

ADVANCED TECHNOLOGY

In the X266 beats the heart of the ambitious BMA project. A hull with modern lines, powerful and safe with elegant and essential equipment, modular versions to all the ways of living the sea. X266, in its originality, represents the dream and essence of boating.





PRACTICAL AND **VERSATILE**

FOR EVERY MOMENT
OF THE DAY



BMAX266

COMPLETE **EQUIPMENTS**

FISH & SUN





HIGH-LEVEL PERFORMANCE

WITH SINGLE OR TWIN ENGINE



X266



EXPERIENCING THE SEA

WITHOUT THOUGHTS



BMAx266

COMPLETE EQUIPMENTS

TOURING



ERGONOMY AND **SPACE**

OF A MODERN OPEN





FUTURISTIC LINES

TO DREAM TODAY



THE COMFORT YOU NEED

TO ENJOY THE SEA





BMAx266



OVERALL LENGTH:
8,20 m



APPROVED LENGTH:
7,45 m



WIDTH:
2,55 m



WEIGHT:
~1.700 Kg



PEOPLE:
11



TANK:
350 L



WATER:
70 L



MIN POWER:
150 CV



SUGGESTED POWER:
300 CV



MAX POWER:
2x200 CV



FOOT:
XL - XXL

Cabin sundeck

X233

INNOVATIVE DESIGN

A global cutting edge project and an innovative design for an outstanding boat.

Render: Carlos Vidal design



BMAx233

COMFORTABLE AND **SAFE**

EQUIPPED WITH A SPACIOUS BOW
DECK AND HIGH BULWARKS.





DYNAMIC AND SPACIOUS EXUDES CHARACTER

BUT WITH ITS AMPLE COCKPIT, HOSPITALITY IS ITS
STRONG SUIT





X233



THINK **BIG**

SPACIOUS AND BRIGHT.
THE PROJECT
OPTIMIZES
ALL THE VOLUME.

Render: Carlos Vidal design





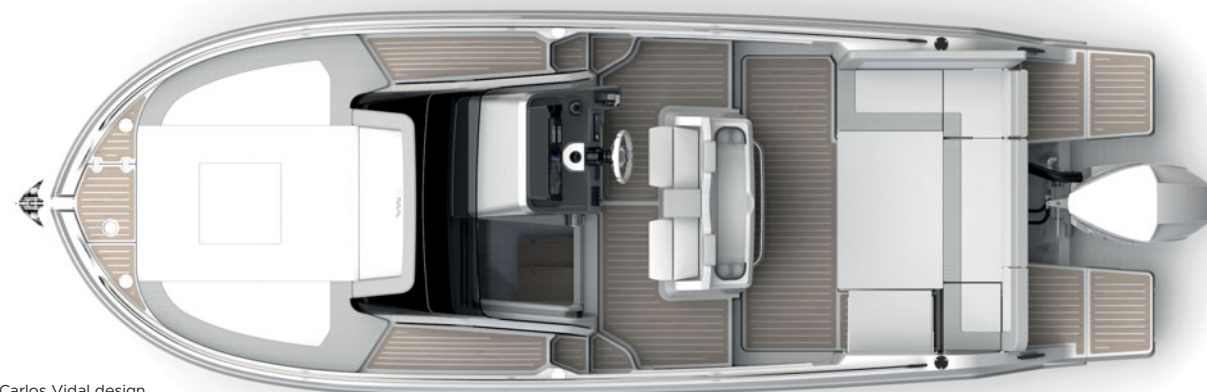
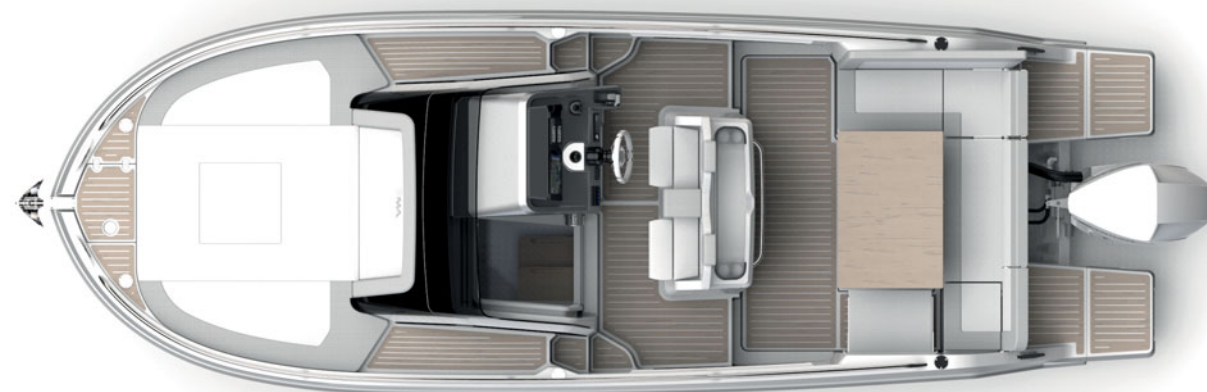
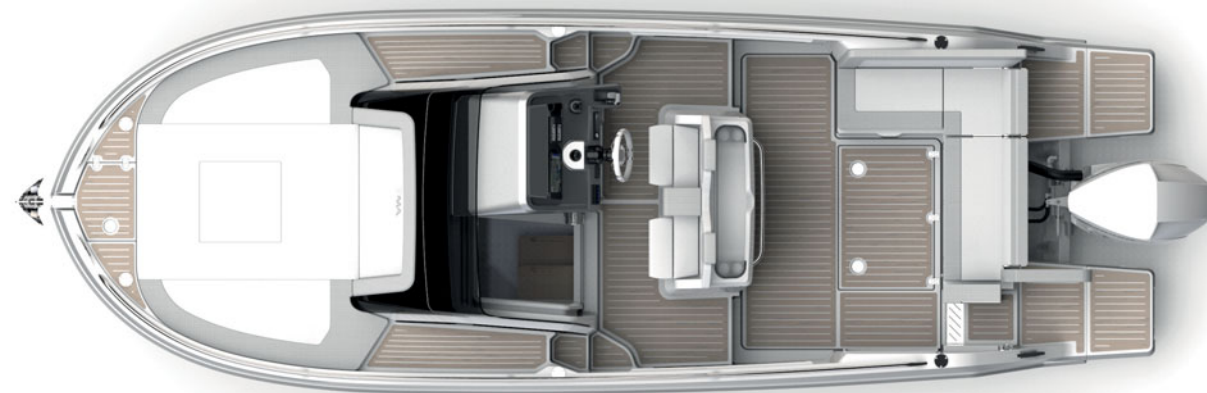
BMA^{x233}

UNCOMPROMISING

COMFORTABLE AND PRACTICE.
THE IDEAL SUNDECK FOR THE FAMILY.

Render: Carlos Vidal design

BMAx233



Render: Carlos Vidal design



OVERALL LENGTH:
7,65 m



APPROVED LENGTH:
6,9 m



WIDTH:
2,54 m



WEIGHT:
~1,900 Kg



PEOPLE:
7 (9)



PLACES IN BED:
4



TANK:
240 L



WATER:
80 L



MIN POWER:
100 CV



**SUGGESTED
POWER:**
200 CV



MAX POWER:
250 CV



FOOT:
XL - XXL

X277

NEW STYLE

The project, developed with Carlos Vidal Design Studio, features all the aesthetic characteristics of the BMA brand with cutting-edge new-generation lines.

Innovation, practicality, space and comfort were the guidelines followed by the designers to create a boat dedicated to conviviality and the pleasure of cruising.

Performance is enhanced thanks to powerful and technologically advanced engines that are the perfect technical and aesthetic combination with the BMA line.

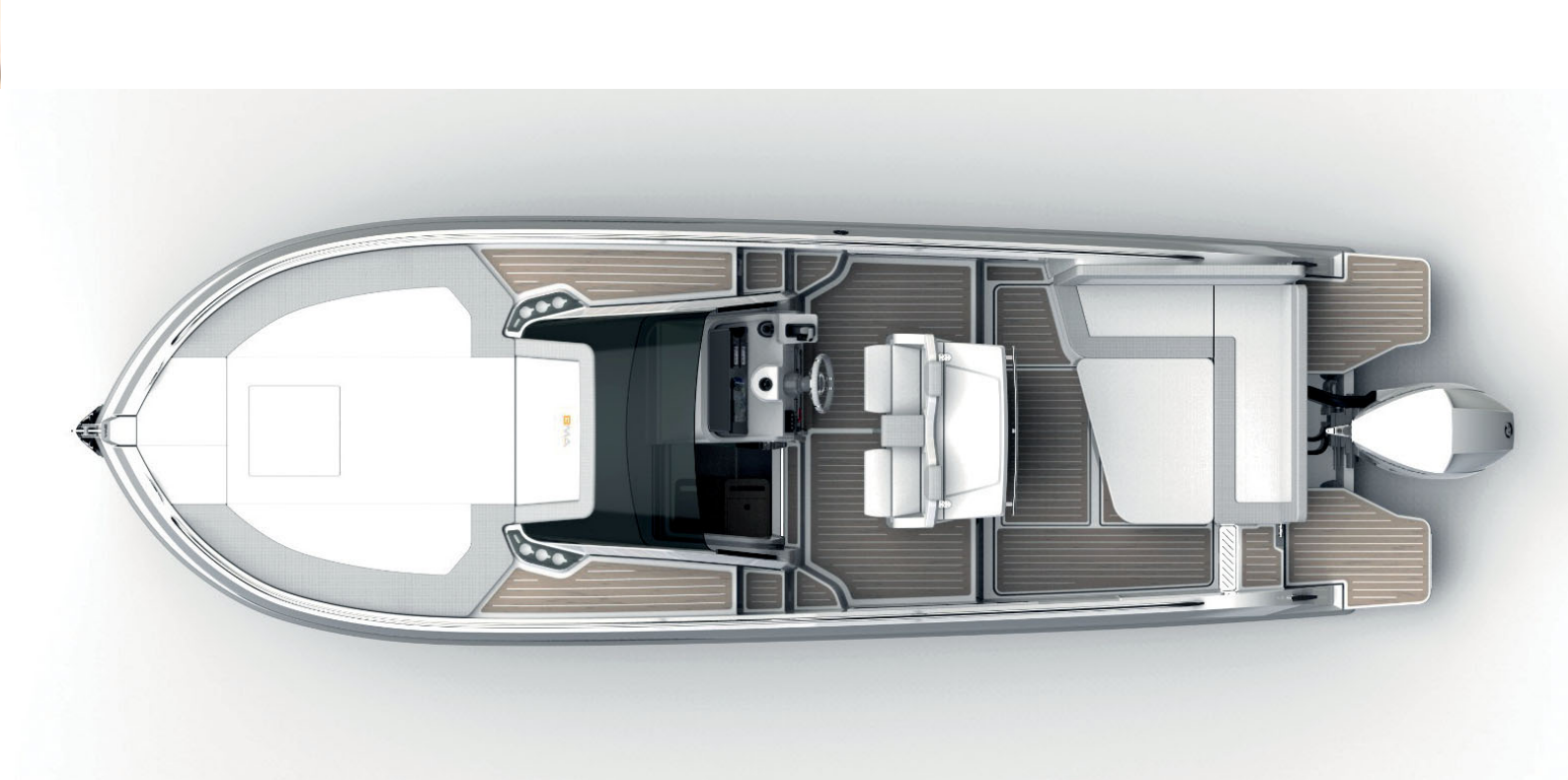


DESIGN
INNOVATION
AWARD

SALONE NAUTICO - GENOVA

S_{nj}

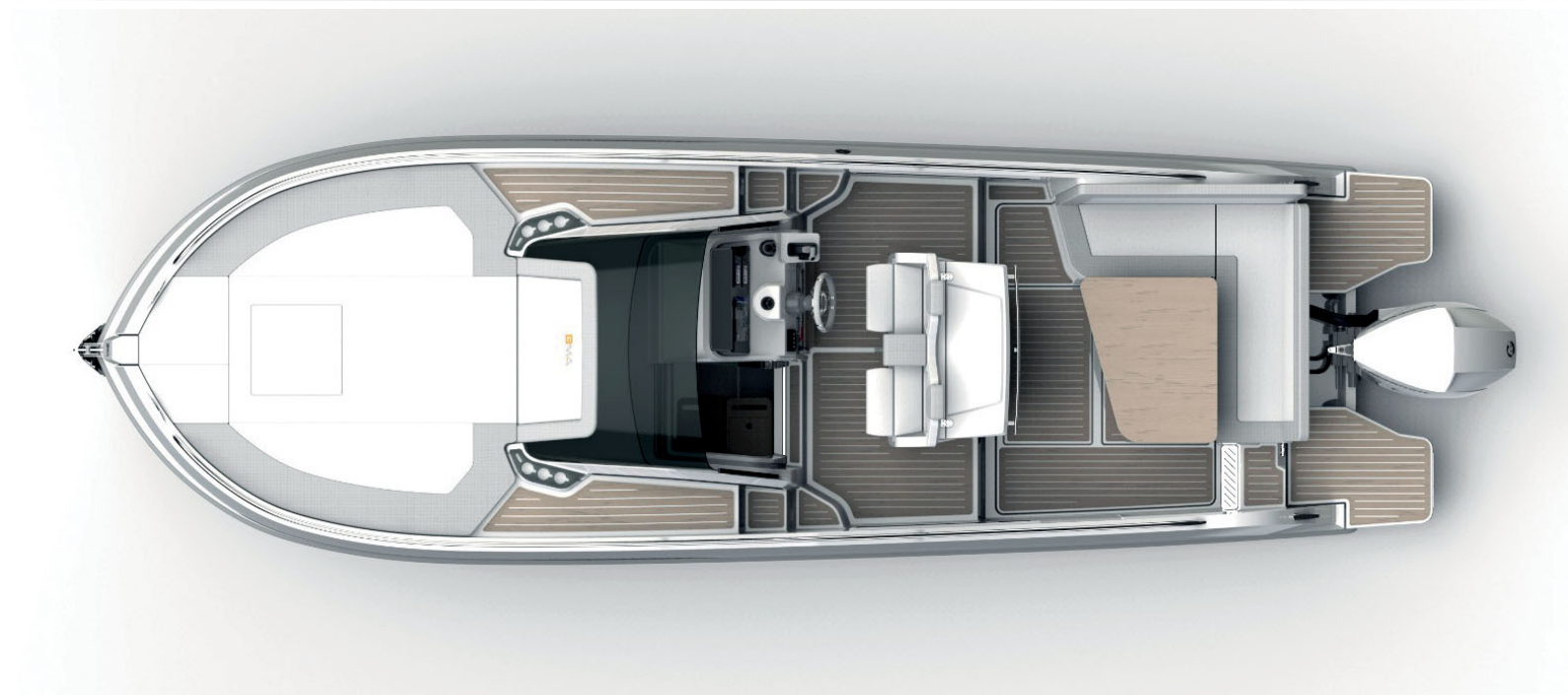




BMAx277

OPTIMISED LAYOUT

TO ENJOY THE SEA



Render: Carlos Vidal design



SPACE AND **LIGHT**

FOR A COMFORTABLE INTERIOR



SOPHISTICATED **DETAILS**

FOR A PLEASANT LIFE ON BOARD





FUNCTIONAL AND **SPACIOUS**

FOR EASY LIFE ON BOARD



BMAx277

FULLY
EQUIPPED

ALL INCLUDED





PERFORMANCES AND **COMFORT**

WITH SINGLE OR TWIN ENGINE
INSTALLATION



X277



ENJOY **THE SEA**

SIMPLY AND EASILY





OVERALL LENGTH:
8,20 m



APPROVED LENGTH:
7,45 m



WIDTH:
2,55 m



WEIGHT:
~2,000 Kg



PEOPLE:
10



PLACES IN BED:
4



TANK:
350 L



WATER:
100 L



MIN POWER:
200 CV



SUGGESTED POWER:
300 CV



MAX POWER:
2x200 CV



FOOT:
XL - XXL

X299

MORE SPACE with style

The new BMA project, born from the experience of *Carlos Vidal Design*, X299 promises to reaffirm all the qualities that have characterized the great success of its younger siblings. Livability, versatility, aesthetic taste, and performance.





COZY ATMOSPHERE

BRIGHT AND WELL-ORGANIZED CABIN



FUNCTIONALITY AND AESTHETICS

IN SPACES TO ENJOY





BIG RELAXATION AREAS

AT THE BOW AND STERN



BMAx299

THE FURNISHINGS

FOR AN OPTIMAL LIFE ON BOARD



Render: Carlos Vidal design



Render: Carlos Vidal design



OVERALL LENGTH:
9,10 m



APPROVED LENGTH:
7,98 m



WIDTH:
2,90 m



WEIGHT:
~3.200 Kg



PEOPLE:
12



PLACES IN BED:
4



TANK:
560 L



WATER:
165 L



MIN POWER:
2X150 CV



SUGGESTED
POWER:
2X200 CV



MAX POWER:
2x300 CV



FOOT:
XL - XXL